



Beeches Community Board agenda

Date: Tuesday 28 February 2023

Time: 6.00 pm

Venue: Via MS Teams - Virtual - [Click here to join the meeting](#)

Membership:

D Anthony (Chairman), D Dhillon, G Sandy, K Ashman, N Naylor (Vice-Chairman), P Kelly, R Bagge, T Hogg, T Egleton, Burnham Parish Council, Dorney Parish Council, Farnham Royal Parish Council, Stoke Poges Parish Council and Taplow Parish Council

Agenda Item	Page No
1 Chairman's Welcome	
2 Apologies for Absence	
3 Minutes of Previous Meeting To agree the minutes of the Meeting held on Tuesday 15 November 2022 as an accurate record.	3 - 8
4 Declarations of Interest	
5 Guest Speakers <ul style="list-style-type: none">Alex Beckett, Climate Change Programme and Partnership Manager, and Phoebe Rison, Climate Change OfficerJoanna Ward, Burnham Library ManagerMichael Mills, Chairman Farnham Common Community Library	
6 Service Director Update and Cost of Living Update An Update to be provided by Richard Ambrose, Director of Major Projects.	9 - 14
7 Action Group Updates Updates to be provided by the Action Group Chairmen.	15 - 22

- 8 Funding, Applications and Projects Update** **23 - 26**
Update to include:
- Burnham Beeches Rotary Club Christmas Parcels Project – George Chapman
 - Festive Fun & Carols – Paul Rowley
- 9 Community Matters**
To include public questions (can be sent to beechescb@buckinghamshire.gov.uk), consultations and petitions.
- 10 Any Other Business** **27 - 46**
To include Local Cycling and Walking Infrastructure Plan.
- 11 Date of Next Meeting**
Tuesday 6 June 2023 at 6pm on Microsoft Teams

If you would like to attend a meeting, but need extra help to do so, for example because of a disability, please contact us as early as possible, so that we can try to put the right support in place.

For further information please contact: Andy Chapman (Beeches Coordinator) on 07753 288039, email Beechescb@buckinghamshire.gov.uk.



Beeches Community Board minutes

Minutes of the meeting of the Beeches Community Board held on Tuesday 15 November 2022 via Microsoft Teams Virtual Meeting, commencing at 6.00 pm and concluding at 7.57 pm.

BC Councillors present

D Anthony (Chairman), G Sandy, K Ashman, P Kelly and T Hogg

Town/Parish Councils and other organisations present

C Linton, G Chapman, J Dax, L Pope, P Rowley, R Worthington, and J Carey

Others in attendance

A Chapman, R Binstead, G Harding, H Cavill, L Headley, N Surman, P Harper, R Ambrose, L Charter, and M Devlin

Agenda Item

1 Chairman's Welcome

Councillor David Anthony, Chairman of the Beeches Community Board, welcomed members and guests to the meeting.

2 Apologies for Absence

Apologies were received from Cllr R Bagge, J Morrissey (MP for Beaconsfield), A Turner (Office manager for Joy Morrissey MP), R Small (Lent Rise School), D Alder (Neighbourhood Watch), M Bergh (Youth Practitioner), A French, R Home, J Jebson, H Mee (The Clare Foundation), R Horton-Kitchlew, E Chason and D Hulme (Family Support Service).

3 Minutes of Previous Meeting

The minutes of the meeting held on Tuesday 26 July 2022 were agreed as an accurate record.

Councillor P Kelly requested an update on the Bucks Mind Mental Health project being ran in schools. Andy Chapman, Community Board Manager, explained that the project had been extended and feedback would be available and circulated at the end of the school term.

4 Declarations of Interest

None.

5 Cost of Living and Financial Security

Gill Harding, Head of Community Support, was in attendance to inform the Community Board about the Helping Hand Team. The presentation slides referred to in this meeting would be appended to these minutes, with some key points below:

- The team received £2.4 million from the Government's Household Support Fund for April to September 2022.
- A further Household Support Fund grant of £2.4 million was received for October 2022 to April 2023 to support vulnerable households.
- The Helping Hand team continued to support individuals and families in need of financial support. It was noted that they can assist with referrals to food banks and other food support organisations. You can get in touch via the [Buckinghamshire Council website](#) or by telephone: 01296531151.
- The level of demand has increased, with on average 50 new Helping Hand applications every working day. It was expected that the number of first-time applications would rise.
- G Harding informed attendees of a range of schemes including Food Support, financial insecurity, cost of living and Opportunity Bucks.

Lisa Pope, Burnham Care and Share, informed attendees of the initiative based in Burnham Park Hall. 2021 was its first full year of operation, issuing 1000 vouchers and supporting 2562 individuals. At point of this meeting, Burnham Care and Share had issued 827 vouchers supporting 2308 individuals. The following was noted:

- The food bank was now operating self-sufficiently, with the help of grants and local donations.
- L Pope had observed an increase in people asking for support with electricity and gas. It was hoped that potential grant funding would help fill this demand. Moreover, St Peter's Church had provided every client with at least 1 energy voucher over the December period.
- A greater number of asylum seekers looking for support were recorded; however it was noted the food bank is only able to assist them as an emergency and not as an ongoing basis.
- Burnham Care and Share had assisted a number of clients to be rehomed.
- They had recently signed up to the Buckinghamshire Council Food Champions Scheme, which encouraged residents to organise long-life food collections for their street. So far, 6 streets had registered.
- Maidenhead Food Share were supporting the Burnham Care and Share.

Pei Harper, Buckinghamshire & Surrey Trading Standards, was present to speak about safeguarding against scams, particularly cost of living scams. The key points were highlighted below:

- Attendees were informed that once an individual has been scammed, they were twice as likely to be scammed within 12 months. Intervention during this period was a key focus for Buckinghamshire & Surrey Trading Standards.
- Types of scams included postal, doorstep rogue traders, online, and text message scams.
- It was noted that Buckinghamshire & Surrey Trading Standards were able to

provide free call blocking devices to avoid scam calls, doorbell cameras, and “no cold calling” sticker packs.

- Buckinghamshire & Surrey Trading Standards were the lead authority in prosecuting illegal money lending and loan sharks.
- P Harper asked attendees to think of any community groups they would like Buckinghamshire & Surrey Trading Standards to liaise with to raise awareness of scams.
- Trading Standards Alert Newsletter was available [here](#).

Lew Headley, Community Impact Bucks (CIB), was in attendance to raise awareness of CIB and its role to support charities, organisations and small groups. The presentation slides referred to in this meeting would be appended to these minutes, with some key points below:

- CIB provided online resources to help start up an organisation, secure funding and find volunteers. In particular, the Buckinghamshire Volunteer Matching Service was noted as a valuable tool.
- CIB offered one-to-one support to organisations with a yearly income of less than £100,000.
- The Cost of Living Survey undertaken in August 2022 received 83 responses from organisations. 83% were concerned with the spiralling costs.
- L Headley highlighted the Charity Excellence Framework, who had developed crisis fund resources for charities.
- Organisations could sign up for free information on a weekly basis with CIB.

Helen Cavill, Buckinghamshire Council, was present to raise awareness and promote the Street Association Scheme. Attendees were informed that it was a resident-led initiative, with members becoming the contact in the street. Members received informational signposting packs to help support vulnerable residents.

During discussion the following points were highlighted:

- H Cavill stated that 50 residents had signed up to the Street Association Scheme in Burnham.
- H Cavill explained that Helping Hands Service could help beyond food support, to include utilities, winter warmth, and white goods. Members were encouraged to refer to Helping Hands if appropriate.
- Councillor T Hogg suggested sharing success stories to encourage people to raise awareness of these services.
- L Pope explained that they receive support from local supermarkets and were able to distribute excess food.

6 Service Director Update

Richard Ambrose, Buckinghamshire Council, was present to give an update. The full report was available in the agenda pack and the following was highlighted:

- Support for Ukrainian Guests past the initial 6 months. The Council had been trying to extend agreements where possible, rematch families, and assist families enter private rented accommodation. Buckinghamshire Council had agreed to financial incentives to help but was looking into increasing the

supply of temporary accommodation.

- The Town and Parish Charter had been agreed and had been published on the Buckinghamshire Council website.
- Buckinghamshire Council had gained powers to enforce moving traffic offences. This was going to be rolled out in 14 locations across Buckinghamshire, with one being in Taplow.
- Consultations including spending priorities for Buckinghamshire Council, Dorney Lake Public Spaces Protection Order, and proposed changes to Home to School transport.

7 Action Group Updates

Councillor George Sandy presented the update for the Wellbeing action group. The following was noted:

- Farnham Royal Girl Group received a new shed via Community Board funding.
- Community Ventures volunteered to run an outreach programme. The Family Information Service provided a list of local organisations who can provide support for young people.
- The Burnham Beeches Rotary Club were planning to distribute 300 Christmas food parcels to families. The project cost was estimated at £9235 and an application had been made to the Community Board for a grant of £5000.

Andy Chapman, Community Board Manager, gave an update on the Infrastructure and Highways action group. The points below were raised:

- Balfour Beatty Living Places maintenance contract. Projects that had not been started would be reviewed by the new contractor to check costings and delivery plans.
- A “menu of options” design would be developed to provide information around small highways schemes with indicative prices and delivery times.
- Community Boards would be consulted over new arrangements with the provider.

Andy Chapman, Community Board Manager, gave an update on the Improving our Environment action group. The following was mentioned:

- Community Board had approved applications from Taplow and Burnham Parish Council for the Eco Audit Projects. These involved surveys of parish buildings to identify opportunities for carbon reduction. The learning from this would be shared.
- A Chapman called for volunteers to get involved in the action group.

8 Funding and Applications Update

A Chapman gave a funding and applications update. The full update would be appended to these minutes. It was noted that around £53,000 had been granted to fund projects.

9 Community Matters

A Chapman mentioned the new Buckinghamshire Boundaries Consultation from the Boundary Commission.

One petition had been running locally through August and September 2022, to remove layby parking on Bath Road. It was noted that there was not enough support for the petition to be taken forward.

10 Action Plan Update

A Chapman explained that this update had been circulated with the agenda report pack and would be available to read.

11 Any Other Business

A Chapman explained that the dates for the 2023 Proud of Bucks Awards had been decided. Nominations would open on 9 January until 12 February 2023.

12 Date of Next Meeting

Tuesday 21 February 2023

This page is intentionally left blank



An update for Community Boards from Buckinghamshire Council (Issue 1 2023 – January 2023)

Local Heritage Listing

Using government funding, the council has developed a Local Heritage List to protect some of the most important heritage sites in the county that contribute to the local character of Buckinghamshire.

The Local Heritage List identifies locally significant heritage sites and celebrates their contribution to local identity and character. These sites include historic buildings (houses, chapels, agricultural and industrial buildings), archaeological sites (upstanding earthwork remains and buried sites), formal gardens, public open spaces, public works of art, monuments and street furniture.

Sites were nominated by local communities and council staff and evaluated by the council's heritage and archaeology team with volunteers also working on the project.

The Local Heritage List is different to statutory listing and designations (e.g. Grade I, II and II* Listed Buildings, Scheduled Monuments, and Registered Parks and Gardens), which are assessed nationally by Historic England.

Assets on the Local Heritage List will be recognised and considered in any future planning applications, helping to protect local heritage assets for future generations to enjoy. There have been more than 2,653 nominations for inclusion on the list and 771 of these sites are now being brought forward for adoption in Phase 1, with the rest being assessed for Phase 2.

To view a list of nominated sites, please visit the [Buckinghamshire Local Heritage List website](#).

Local Plan update – sites to be published following call for sites

Following the 'Wider' call for sites last year, over 700 sites have been submitted for consideration as land for possible future development within Buckinghamshire. Our previous calls for brownfield sites resulted in 300 sites being suggested. An interactive map showing these has now been published at [Brownfield CFS 2021-22 \(arcgis.com\)](#)

A list of other sites which have been submitted as part of our wider call for sites will be available in the coming weeks. Officers have now started the process of evaluating each of the sites against the criteria of suitability for their chosen use, availability and deliverability over the plan period to 2040.

Work has commenced on an Employment and Retail Evidence Study and a Sustainability Appraisal Scoping Report (we expect to consult with the relevant statutory bodies on this shortly). We are in the process of appointing consultants for several other studies which are needed to inform the plan.

We are currently working to set out the overarching vision and objectives for the Local Plan for Buckinghamshire which will shape our work going forwards. In accordance with good practice on community engagement, the team is working on a forthcoming public consultation which will enable people to comment and give feedback on the draft Vision and Objectives.

Current and upcoming consultations

Buckinghamshire Council consultations

Current consultations and surveys from Buckinghamshire Council are available to view on our website <https://yourvoicebucks.citizenspace.com/>

Where appropriate, we also list NHS consultations and surveys as well.

Cost of Living Programme – Community Board Update February

As a Council, we recognise the growing pressures being faced by our residents linked to the increases in the cost of living.

Buckinghamshire Council has made further provision to assist residents who are in need, which is especially important during the winter months, developed through close partnership working, particularly with the voluntary and community sector.

We are continuing to develop our offer of support to residents, which is summarised below, and further information and updates will be published on our website.

- **Help with the cost of living council homepage** – Our updated website ensures people can access information about the range of support available, including: support with food, fuel and household bills, finding a place to keep warm, obtaining essential household items, support available from Government, support for pensioners and how to contact the Helping Hand team: <https://www.buckinghamshire.gov.uk/cost-of-living/>
- **Helping Hand** - Our Helping Hand service provides support to local individuals and families who are experiencing financial hardship. The team can be contacted on 01296 531 151 or through the [online contact form](#). You can read more about the help available on the [dedicated section of our website](#).
- **Food and hot meals schemes** – There are many food schemes available in Buckinghamshire. Further information is available in the cost of living section of the Council website. [Help buying or accessing food | Buckinghamshire Council](#)

We have also partnered with local organisations to launch the Food Champions Network, whereby residents volunteer to collect food on behalf of their local food banks and deliver it to the food banks. [Become a Food Champion and help your local community | Buckinghamshire Council](#)

If a community organisation wishes to set up a hot meals scheme, a toolkit with guidance on how to do this will also be available in the cost of living section of the Council's website [Toolkit: hot meal provision for groups | Buckinghamshire Council](#)

- **Social media campaign** – We are providing a range of cost of living and energy efficiency related content and links for residents through our social media outlets – Facebook, Twitter and Instagram. Printed materials are also available in libraries and other welcoming spaces.
- **Partnership with Heart of Bucks for the crisis appeal** – For those who are in a position to help financially during this crisis, we have partnered with Heart of Bucks to raise funds for those in need. Residents are able to donate money via the Heart of Bucks Crisis Appeal webpage. [TotalGiving™ - Crisis Appeal for Buckinghamshire - Heart of Bucks - Fundraising Page](#)
- **Welcoming Spaces** - Starting with council and community libraries, these locations will provide a warm, welcoming and supportive space for anyone who needs it. These are places where residents can come into safe and inclusive spaces, free of charge, to stay warm and enjoy a little company. Use of facilities, including free wifi, will also be available in these places along with information and support. [Find a place to keep warm \(Welcoming Spaces\) | Buckinghamshire Council](#)

Welcoming Spaces have started extending to some private and community venues. Information about these will be accessible through the Bucks Online Directory and [Find a Warm Welcome Space Today](#).

If a community venue wishes to set up as a welcoming space, a toolkit with guidance is also provided in the cost of living section of the Council's website .

- **Wycombe Wanderers Warm Hub** - Operating every Tuesday and Thursday from 5pm-8pm until 28th February, the Warm Hub is accessible to anyone aged over 65 and attendees can be accompanied by 1 guest (pre-booking is required to detail any access or dietary requirements). 4 family days, open to the entire community, will also be communicated in due course. More details are available at [Warm Hub - Wycombe Wanderers \(wwfc.com\)](#)

- **Warm Boxes** – We have launched a warm box offer for residents that will enable them to collect free essential items to help with keeping warm from selected welcoming spaces. Items available include things such as blankets, hot water bottles, thermomugs and thermal socks. The offer is currently available from our 9 county libraries plus the locations below:
 - Wycombe Wanderers Warm Hub
Over 65's (with a +1) Every Tues/ Thurs in Jan / Feb 2023 between 5-8 pm

 - Wycombe Museum – Priory Avenue High Wycombe
10am-5pm Tues – Fri & Sunday (closed Saturday)

 - St Vincent De Paul Society
Open Wednesday, in Upper room, after mass 9:30am. Hot drinks, biscuits. Listed under <https://www.warmwelcome.uk>

 - Christ The Servant King – Booker
9am-11.30am. Tuesday morning sessions are especially arranged for carers/parents and toddlers, 9am-12pm- Wednesday Community Cafe. New4You- 10th Feb and 10th March. 0-5 year old clothing, warm drink and cake all free, 10-11.30am

 - All Saints Church - High Wycombe
Mustard Seed cafe, Mon 10-2, Tues 10-1, Wed 10-12, Th 10.30-1, Fri 10-12.30, Sat 10.30-12.30

 - Hills Café – Micklefield
Mon- sat 9.15-1.30pm

 - St Andrews Church – Totteridge
Every Wednesday 9.30-11.30am. Renew space- chat and a cup of tea and bring a hobby - parking, free WIFI, hot drinks, accessible toilets

 - St Peter's Church – Coventon Rd Aylesbury
Thursday morning Community Cafe and Warming space soup lunch 10:00am - 1:00pm, Foodbank also present each week and Helping Hand member attends once a month

- Southcourt Baptist Church – Penn Rd Aylesbury
- Aylesbury Vineyard- Gatehouse Close Aylesbury
Foodbank, Job Club and drop in on Tuesday morning

Residents can ask a member of staff who will be able to help.

If you know of any community projects that may wish to purchase some warm boxes then please raise this with the Community Board manager.

For more bespoke help with essential items to keep warm, residents may contact the Helping Hand team.

- **Library Fines Amnesty Jan & Feb** – There will be a fines amnesty in all [Bucks Libraries](#) during January and February. Residents can just drop into one of the libraries during this time and ask a team member to have all historic fines on their accounts cleared. Any fines on items returned late during these months will also be waived.
- **Better Housing Better Health** - Better Housing, Better Health (previously called the Affordable Warmth Helpline) helps Buckinghamshire residents keep warm and well at home and improve the energy efficiency of their homes.

For self-referrals residents may visit the [Better Housing, Better Health website](#) or call [0800 107 0044](#).

We also offer guidance for [saving energy and tackling climate change at home and in other buildings](#).

- **Get around for £2 on the bus scheme** - From 1st January to 31st March a single bus journey within the Arriva bus zone will cost no more than £2. This includes Buckinghamshire and cross-county routes with some exclusions. More details are available at: [Get around for £2 | Help for Households | Arriva Bus UK](#), where residents may check if their local bus route is included in the scheme.
- **Pay council tax over 12 months instead of 10** – Residents now have the option of paying council tax evenly across the year instead of 10 months with a two month break in February and March. This should spread out the cost of an annual Council Tax bill into 12 smaller, monthly payments. More details and the request form are available at: [Different ways you can pay your Council Tax bill | Buckinghamshire Council](#)
- **Resident Support Leaflet** – A printed Resident Support Leaflet summarising available cost of living support will soon be available in libraries and from partner organisations such as Citizens Advice Bucks and food banks. These will also be distributed directly to vulnerable residents by partner organisations.

This page is intentionally left blank



Community Board Beeches

Action Group:
Wellbeing

Meeting date: 23

November 2022 at 6pm via MS Teams

NOTES

In attendance: George Sandy (Chairman), Ralph Bagge, Paul Rowley (Farnham Royal PC), Carol Linton (Burnham PC), Marilyn Rolfe (Farnham Royal PC), Jackie Slater (Burnham PC), Ruth Senior (Dorney PC and Taplow PC), George Chapman (Burnham Beeches Rotary), Shirley Shaw (Learning and Sharing Together), Terry Gamble (The Well @ Lent Rise), Debbie Hulme (Community Coordinator), Monica Bergh (Lead Practitioner Youth VCS), Krissie Hutton (Youth Participation Coordinator), Andy Chapman (Community Board Manager)

No	Topic	Lead
1	Welcome and Introductions	Chairman
2	Apologies for absence <ul style="list-style-type: none"> - Rachael Small (Lent Rise School), Sue Strange (Bluebell Memories), Ellis Brickley (Burnham Royal British Legion) 	Manager
3	Notes from the previous meeting <ul style="list-style-type: none"> - Agreed - PR and AC to liaise on electricity supplies at The Dell 	Wellbeing Action Group 28.9.22
4	Project and funding updates, including: <ul style="list-style-type: none"> • Farnham Royal Parish Council - Festive Fun & Carols. The application for £2,055 towards the community event and local business market is currently with the Board for comment before going to Members for voting • Burnham Beeches Rotary – Christmas Parcels. The application for £5,000 towards the project providing 	Manager

	support to local families is currently with Members for voting	
5	<p>Applications and proposed projects for discussion:</p> <ul style="list-style-type: none"> • 'Youth Summit' - proposal to gather practitioners to develop collaborative engagement strategy. It was agreed that KH, MB, DH and AC meet separately to develop plans and report back. • Burnham Lions – Christmas Parcels. Although the project is taking place, the application to the Board for financial support is being held over until next year • Farnham Common Village Hall – Marilyn Rolfe reported that the Trustees are undertaking a programme of refurbishment and improvement works and would like to apply to the Board for support with kitchen works with a view to improving facilities for local groups and hall users. MR and AC to discuss application. • Learning & Sharing Together: The Monday Club & Lent Rise School – Shirley Shaw outlined the planning for this new intergenerational project. It was agreed that a small grant application would be suitable. SS, RS and AC to discuss application. • The Well @ Lent Rise: The Meeting Place and Wake Up Wednesday – Terry Gamble provided an update on the groups and highlighted current challenges around increased food, rent and energy costs. The Meeting Place regularly has 30-40 attendees, with 60 registered. AC to explore possible Household Grant support. TG and AC to liaise. • Friends of Burnham Library – small grant request: rug for children's area and noticeboard for promotion. No further update has been received from the applicant. AC to follow up. 	Chairman / All
7	<p>Agree actions to take forward</p> <p>- As above</p>	Chairman / All
8	Date of next meeting – 25 January 2023, 6pm on Teams	Manager
9	Any other business/topics for future discussion	Chairman/All

	<ul style="list-style-type: none">• Burnham Library – Healthy Libraries. Jo Ward, library manager, has contacted the Board with initial information about a Public Health focus group that she is involved with, looking to support local initiatives on physical and mental health. More information to follow. AC to follow up.• Smokefree Sidelines. Buckinghamshire Council is working with the Berks and Bucks FA to discourage smoking and vaping on the touchline of young peoples’ matches. Burnham FC is one of the first six clubs to join the scheme – more clubs are welcome to sign up. KH updated that school children had been involved with producing publicity materials. RB praised Burnham FC for taking part.	
--	--	--

This page is intentionally left blank



Community Board Beeches

Action Group:
Wellbeing

Meeting date: 25

January 2023 at 6pm via MS Teams

AGENDA and NOTES

In attendance:

Cllr George Sandy (Chairman), Cllr Kirsten Ashman, Cllr Paul Rowley (Farnham Royal Parish Council), Cllr Carol Linton (Burnham Parish Council), Cllr Jackie Slater (Burnham Parish Council), Cllr John Carey (Burnham Parish Council), Cllr Marilyn Rolfe (Farnham Royal Parish Council), Zoe Hatch (Taplow Parish Council and Sound & Song CIC), George Chapman (Burnham Beeches Rotary Club), Shirley Shaw (Learning and Sharing Together), Ian Griffith (Arbour Vale Enterprise Academy), Neil Sykes (Arbour Vale School), Jo Ward (Manager, Burnham Library), Aldo Simone (Trading Standards), Monica Bergh (Lead Practitioner, Youth VCS), Debbie Hulme (Community Coordinator), Andy Chapman (Board Manager)

No	Topic	Lead
1	Welcome and Introductions	Chairman
2	Apologies for absence <ul style="list-style-type: none"> - Cllr Ralph Bagge, Cllr Paul Kelly, Cllr Trevor Egleton, Louise Hayday (Burnham Parish Council), Rachel Small (Lent Rise School), Terry Gamble (The Well @ Lent Rise), Ellis Brickley (Burnham Royal British Legion), David Alder (Neighbourhood Watch), Sue Strange (Bluebell Memories), Angela O'Connell (TVP Neighbourhood Team), Krissie Hutton (Youth Participation Coordinator) 	Manager
3	Notes from the previous meeting <ul style="list-style-type: none"> - Agreed 	Wellbeing Action Group 23.11.22
4	Project and funding updates, including: <ul style="list-style-type: none"> • Farnham Royal Parish Council - Festive Fun & Carols: 	Manager

	<p>- Paul Rowley thanked the Board for its financial support and reported that the event had been very successful with a good turnout of local residents. It had been necessary to change the event location but this had not had a negative impact. Discussions are underway for next year's events, including an ambition amongst local groups to collaborate and share planning and resources for a more coordinated approach to the festive season.</p> <ul style="list-style-type: none"> • Burnham Beeches Rotary Club – Christmas Parcels <ul style="list-style-type: none"> - George Chapman passed on the Club's gratitude for the Board's support and reported that, working with Burnham Care & Share and Lent Rise, St Peter's, St Mary's and Farnham Common Infant and Junior schools, parcels had been gifted to 317 families in the Farnhams and Burnham. As well as food and Christmas items, each pack also contained educational resources, with a cost per parcel of £30 but a value of £50. 	
5	<p>Applications and proposed projects for discussion:</p> <ul style="list-style-type: none"> • Sound & Song CIC - Singing for Mental Health & Wellbeing for New Mothers Zoe Hatch spoke to the funding recommendation report previously circulated. ZH provided an update on a new partnership with Bucks Culture looking at how local pilots such as this could be expanded to become countywide projects. A question about the rates of pay for the facilitators was asked – ZH responded that facilitators are skilled in therapeutic delivery, as befits working with vulnerable people and/or those with conditions such as post natal depression, that it is in line with musicians' union rates and that overall the proposal represents good value – the questioner was content with the response. Jackie Slater recounted seeing a similar group delivered in Yorkshire, praising the skills of the facilitators working with new and pregnant mums. Debbie Hulme offered the Family Centre as a future venue – Burnham Parish Council is funding the £1,350 venue costs for the pilot; the Clare Foundation is contributing £1,200. The group recommended that the application progress to the Board. • Farnham Common – Village Hall Refurbishment Marilyn Rolfe described the role and importance of the Hall in village life, not least in helping combat loneliness and isolation and offering an affordable venue for residents to hire. The project aims to improve and upgrade the electrics, refurbish the main kitchen 	Chairman / All

and create a kitchen area in the small hall. A saving of £9,000 has been made against the original quotations – the request to the Board is for £15,000 towards a project cost of £32,000. The group agreed to recommend the project for consideration and MR will submit the formal application this week.

- **Learning & Sharing Together – The Monday Club & Lent Rise School** The group agreed that it would recommend this Small Grant application for less than £1,000 pounds to support this new intergenerational project. Shirley Shaw to liaise with AC on final costings and application
- **The Well @ Lent Rise – The Meeting Place and the Stitchers group.** The Well had proposed two funding applications – one for a contribution to the purchase of two parasols that would enable/encourage attendees to make more use of the outside area; one for a contribution to enable the Stitchers group to visit an exhibition to improve skills and knowledge. Current quote of £1,400 for two parasols that would have the stability and moveability required; cost for trip estimated at £500. Support for the parasol application – though GS suggested revisiting the costings to see if a cheaper alternative might suffice. Concern was expressed that funding a trip could set a difficult precedent. AC to liaise with the applicant.
- **Youth Practitioners’ Event** - to collaborate with local organisations and providers on designing a youth engagement strategy. Monica Bergh and Debbie Hulme provided an update on the planning for the event – expected to be held at Burnham Youth Club, early May date tbc. Draft poster has been created. A list of invitees had been created – AC to circulate for comment.
- **Burnham Library** – Joanna Ward, manager of Burnham, Iver and Gerrards Cross libraries, provided an update on the facilities and activities that are available to local residents. Regular sessions such as Scrabble, Craft, Knitting and Chess, and the activities for toddlers, are supplemented during school holidays with a range of bookable and drop-in events. Burnham Library has been selected to be one of the libraries taking part in the Healthy Libraries pilot project, running until April – more information to follow. JW asked for suggestions on how to help the library celebrate its forthcoming 50th Birthday – lib-bur@buckinghamshire.gov.uk
- **Arbour Vale School/Employer Academy** Ian Griffith, as Chairman of this new collaboration between the school and Burnham Beches Rotary Club, spoke to the briefing document

	<p>that had been supplied in advance. With an ambition to help pupils prepare for and access employment and training opportunities in the local area, Ian described the wish to develop contacts who might be able to assist in building a network of employers and employment organisations to join the Academy. As Chair of Governors of a nearby school, PR offered to meet with Ian and Neil; as an Ambassador at Bourne End Academy, John Carey offered to discuss their World of Work programme and to share knowledge and experience; Zoe Hatch stated that a relative had been a previous Head at Arbour Vale and suggested linking with the Ark Café project at Marlow Methodist Church. AC had provided an introduction to Bucks Business First, which led to arrangement of a meeting with the Thames Valley Berkshire Local Enterprise Partnership. Further ideas to Ian at ianandvalgriffith@gmail.com</p>	
7	Agree actions to take forward	Chairman / All
8	Date of next meeting – 8 March 2023, 6pm on Teams	Manager
9	<p>Any other business/topics for future discussion</p> <ul style="list-style-type: none"> - Paul Rowley reported that, with an increase in the numbers of families facing financial difficulties, there is a number of local children unable to take part in school residential trip. Farnham Royal Parish Council’s charitable side is providing some funding and Paul asked whether the Board would consider contributing. GS counselled against establishing a precedent but invited an application. - Debbie Hulme advised that an Early Help Partnership event for non-Local Authority partners to support local young people would be taking place at the Family Centre on Monday 30th and that she would feed back to the group. 	Chairman/ All



Community Board Beeches

Funding Report Beeches Community Board – February 2023

The table below provides a summary of the funding awards made by Beeches Community Board during the current financial year.

Community Board Fund 2022/23	Project	Funding Allocated	Remaining budget as at 15.2.23
£100,388	Farnham Common Girl Guides Storage Shed	£2,675.99	
	Royal British Legion PRIDE	£2,925.00	
	Dorney Parish Council – Mobile Vehicle Activated Signs	£6,950	
	Taplow Parish Council – Mobile Vehicle Activated Signs	£13,740	
	Community Youth Ventures – Youth Outreach Project	£900.00	
	Blackpond Lane Footway Extension (extra contribution)	£21,329.61	
	Burnham Parish Council – Eco Audit	£2,625	
	Taplow Parish Council – Eco Audit	£1,550	
	Burnham Parish Council – MVAS Equipment	£8,334.14	

	Farnham Royal Parish Council – Festive Fun & Carols	£2,055	
	Burnham Beeches Rotary Club – Christmas Parcels	£5,000	
Total Allocated		£68,084.74	
Budget Remaining			£32,303.26

The following projects have been recommended by the relevant action group and circulated to the wider Board for comment, and are currently with Buckinghamshire Councillors for voting:

Applicant	Project	Funding Request
Sound & Song CIC	Mental Health Wellbeing for New Mothers	£8,864 (contributory funding of £2,550)
Learning & Sharing Together	Intergenerational Project with Lent Rise School & Monday Club	£500 - small grant

The following Community applications are before the relevant action group for discussion, or are undergoing due diligence assessment:

Applicant	Project	Funding Request
Farnham Common Village Hall	Kitchen Refurbishment	£15,000 (contributory of £17,000)
The Well @ Lent Rise	Stitchers Group Exhibition Visit	£350 - small grant
Cloudy IT	Schools IT project	tbc
Farnham Royal Parish Council	Replacement MVAS Unit	£1,648.75 (contributory

		funding of £1,649.85)
--	--	--------------------------

The following projects are before the Highways action group:

Applicant	Project	Funding Request
Lent Rise School	Lights and road markings	PID: Feasibility study: £3,091.05; Total Delivery Cost: £19,785.33 (Full project cost is outside the scope of CB funding – enquiries into use of Section 106 monies ongoing)
Stoke Poges Parish Council	Rogers Lane – cyclist and pedestrian safety	PID: Feasibility study: £4,915.64 (Highways recommends waiting for completion of nearby waiting restrictions project)
Councillors	Taplow Common Road/Cliveden Road junction	PID: Feasibility study and road safety audit: £5,838.65. (New contractor to revise scope and recost project at request of Action Group)

This page is intentionally left blank



Buckinghamshire Local Cycling & Walking Infrastructure Plan (LCWIP)

Beeches Community Board Profile

The Buckinghamshire LCWIP will identify and develop a strategic network for walking, wheeling and cycling (active travel) between and through settlements across the County. This profile presents an overview of information relevant to the LCWIP network planning for the Beeches Community Board area. This data includes: local population; key origins and destinations for travel; travel patterns; physical geography; existing active travel infrastructure; committed schemes and local aspirations for new active travel infrastructure. The contents of this profile will be used for baseline evidence to help understand the current context and inform network planning.

Comments are welcomed on the material presented.

Please visit: bit.ly/BucksLCWIPEngagement to submit your comments.

January 2023



The People



2

Beeches

In comparison to the Buckinghamshire average, the Community Board area has greater proportions of people aged over 45 and generally smaller proportions of younger people. 13.7% of the Community Board area population have long-term health problems or disabilities which affect their day-to-day activities, which is slightly higher than the Buckinghamshire average of 13.4%.

The English Indices of Multiple Deprivation is a relative measure of deprivation in small areas or neighbourhoods. It comprises seven themes, covering income; employment; health and disability; education, skills and training; crime; barriers to housing and services; and living environment. The higher the deprivation score, the more deprived an area is. The Community Board area has an average deprivation score of 9.7 (compared to Buckinghamshire as a whole at 10.1), with comparatively more deprived neighbourhoods at North Burnham and Stoke Green.

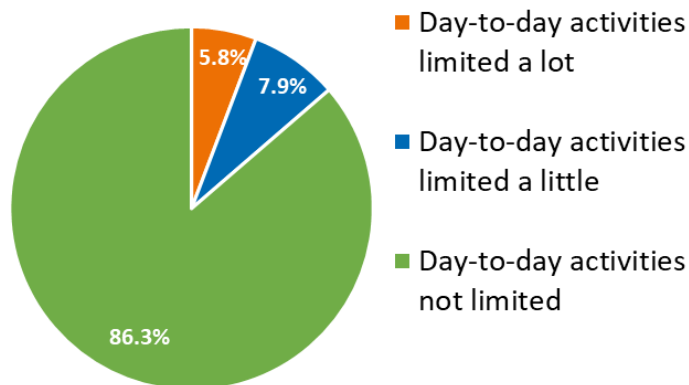
Total population in Community Board



Source: [Census 2011](#)

Page 28

Proportion of Population with Long-term Health Problems or Disability in the Community Board



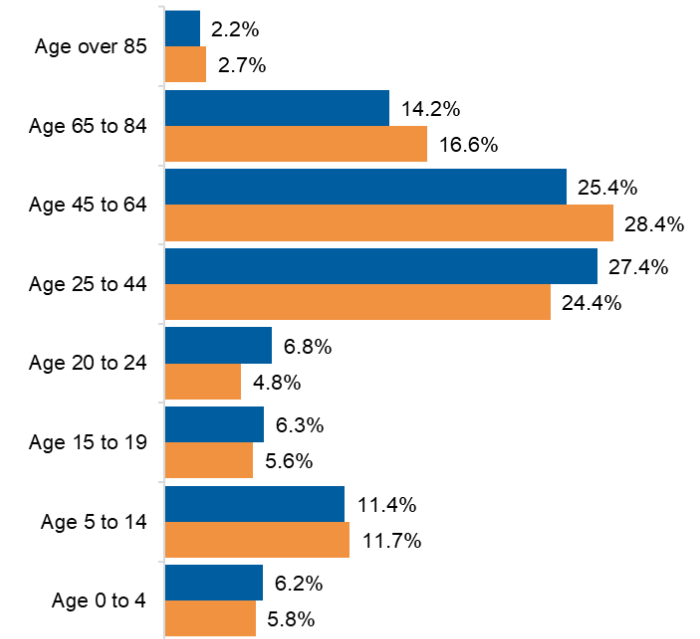
Source: [Census 2011](#)

Index of Multiple Deprivation in Community Board



Source: <https://www.healthandwellbeingbucks.org/local-profiles>

Age Distribution

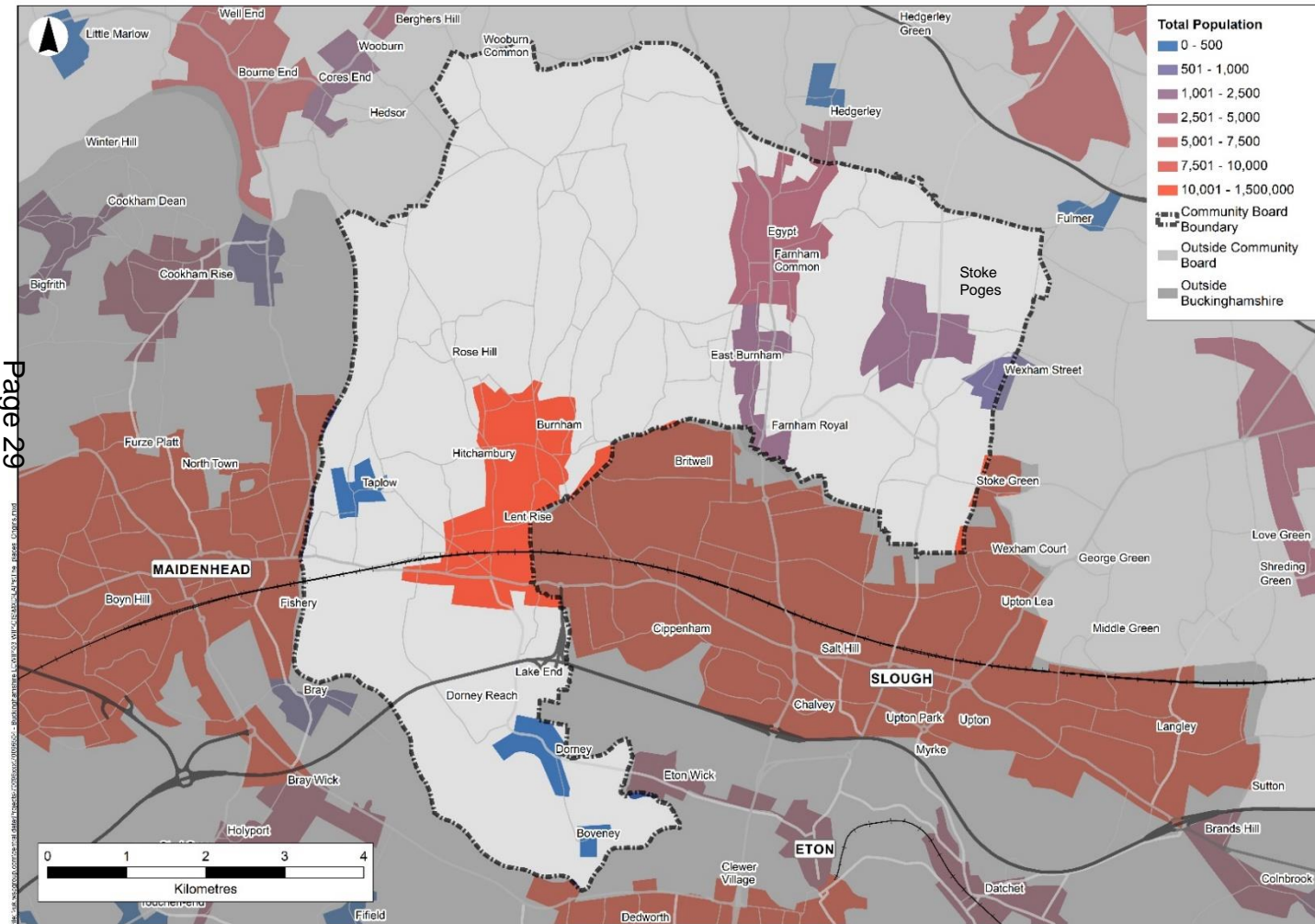


■ Buckinghamshire Average ■ Beeches

The Places



The map below shows the broad location of the main settlements in and around the Community Board area, categorised by population size. The built-up area boundaries are approximate, reflecting the high-level national dataset used. The population data is based on 2019 estimates.



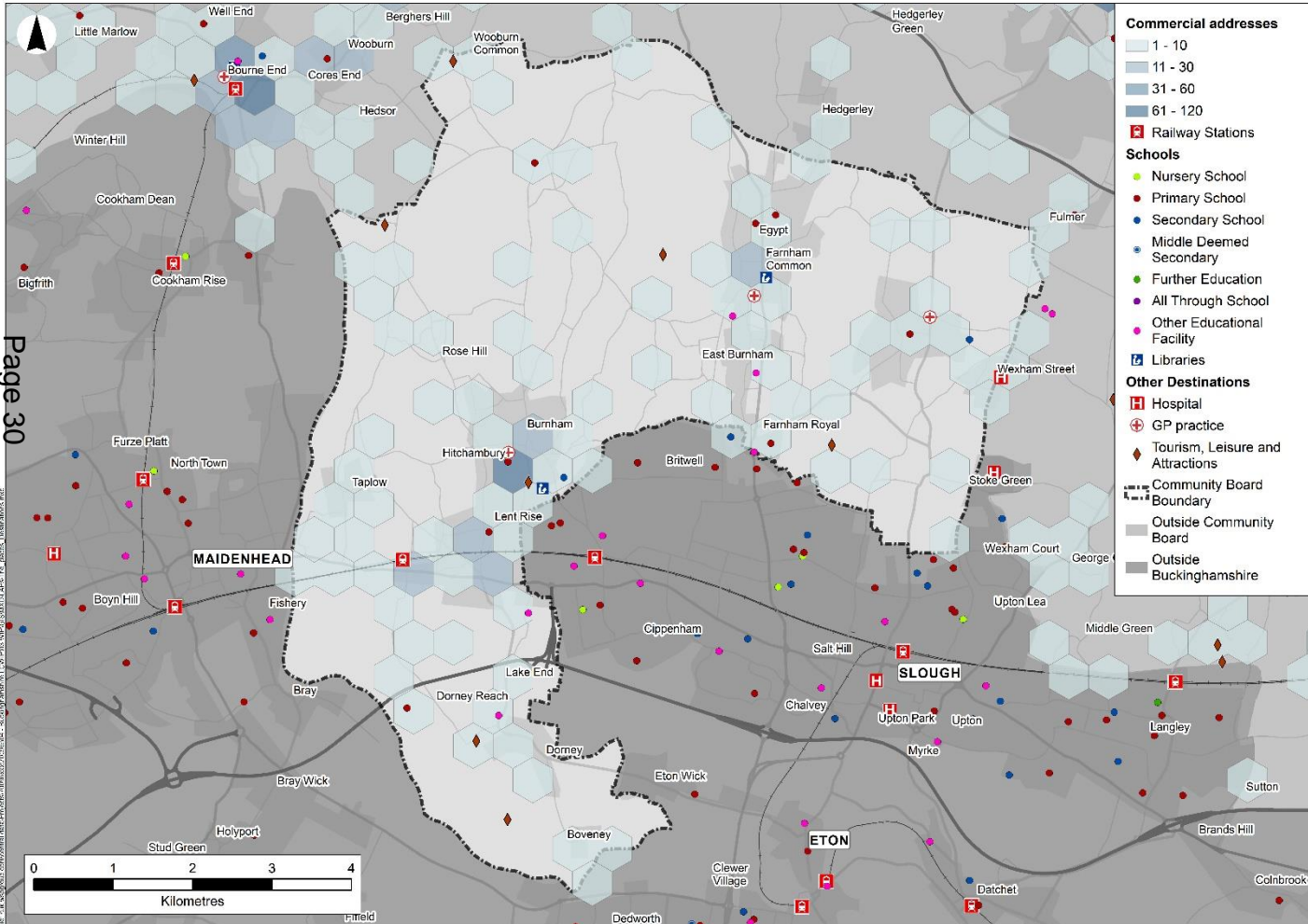
Within the Community Board area, Burnham has the largest population (11,630, equating to 47% of Community Board area population).

The next largest settlements in the Community Board area are Farnham Common / Egypt, Stoke Poges, Farnham Royal and East Burnham. Smaller villages, scattered hamlets and more sparsely populated rural areas are characteristic of other parts of the Community Board area.

Surrounding the Community Board area, the largest settlements in terms of population are Maidenhead (56,738), Slough (141,376) and Windsor (32,928).



The map below identifies the location of selected key facilities and services in and adjacent to the Community Board area. These locations include education, employment, healthcare, rail stations and selected leisure/tourism sites. Commercial addresses are shown as hexagons on the map below and are assigned colours based on the concentration of employment, retail and facilities across the Community Board area.



Burnham and Farnham Common are the key hubs within the Community Board area, with a range of services, facilities and businesses. Burnham has grammar school provision, whilst the one rail station within the Community Board area is Taplow, located to the south of the main village. Further shopping and employment is located along the A4 Bath Road corridor.

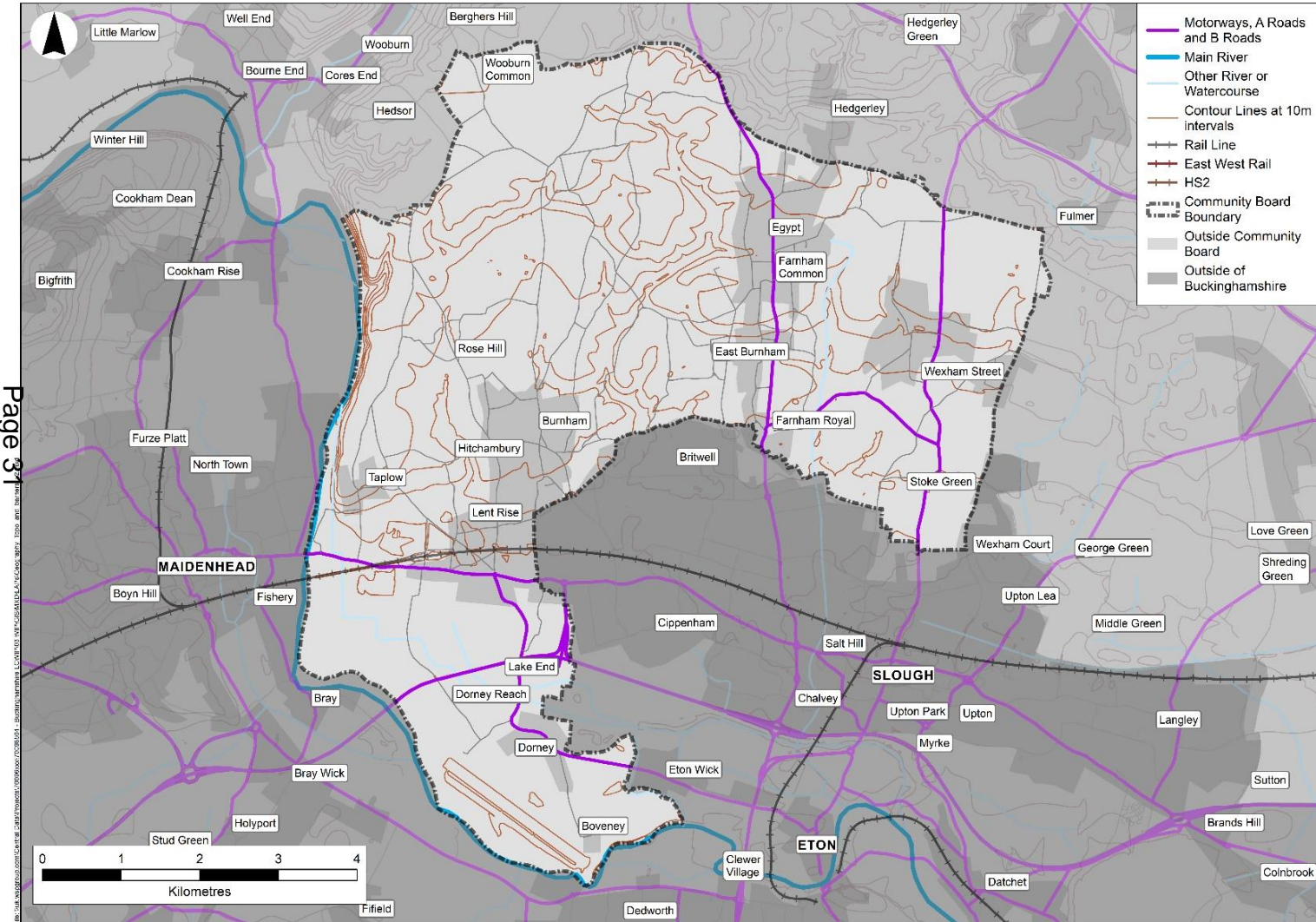
Key leisure and tourism locations include Dorney Lake, Dorney Court, Cliveden and Burnham Beeches National Nature Reserve.

Key locations outside of the Community Board area, such as Slough and Maidenhead, have significant education, employment, leisure and shopping destinations which are likely to serve residents within the Community Board area. The secondary catchment school for the area is Bourne End Academy, to the north-west.

The Geography



The map below outlines key aspects of geography which can influence active travel journeys within the Community Board area.



Most of the Community Board area topography is relatively gentle, rising from 21m above sea level at the River Thames by Dorney Lake, to 100m at Wooburn Common on its north-western edge.

The M4 motorway, Great Western Mainline, River Thames, Jubilee River and roads with high traffic flows can create severance effects for people walking, wheeling and cycling. If crossing points are limited in number, poorly located, or unsuitable for some users, people will be deterred from making active travel journeys or will use alternative routes, which may be longer.

The Community Board area has several roads used by more than 5,000 vehicles per day, and/or with vehicle speeds in excess of 30mph. Government guidance identifies that these conditions will exclude most people from cycling along these roads; these vehicle speeds and flows will similarly limit or prevent safe crossings by active travel without dedicated infrastructure.

The Movement: Existing Travel Patterns

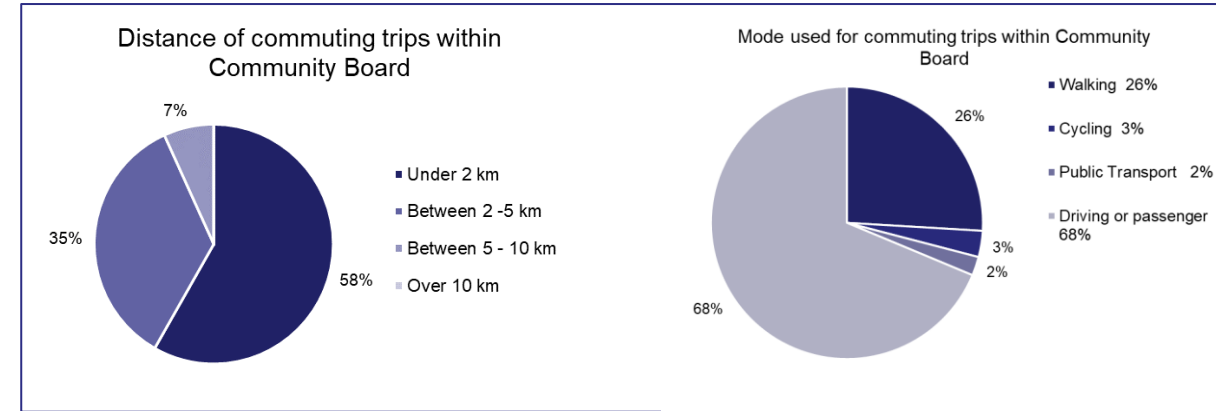


The National Travel Survey (NTS) is the primary source of data on personal travel patterns. A representative sample of around 7,000 English households are surveyed each year. According to the 2019 NTS, the most common trip purpose was for leisure (26% of all trips), followed by shopping (19%) and commuting (15%). Detailed travel pattern data is not available for most journey purposes. Therefore, the Travel to Work data collected in the Census is presented as a proxy for wider travel patterns. Detailed 2021 Census data is not yet available (and will reflect Covid lockdown travel behaviour); therefore 2011 data was analysed.

While trips across the county border will be considered for the network planning, Census data presented in this Community Board Profile focuses on trips within the council area. This enables trends in mode used and distance to be more clearly identified.

Within the Beeches Community Board area, 58% of commuting trips are under 2km and 35% of commuting trips are between 2 and 5km (93% of all trips when taken together). Based on their shorter distance, many of these trips could be walked, wheeled or cycled; however, only 29% of trips of 5km or less are currently undertaken using active modes of travel.

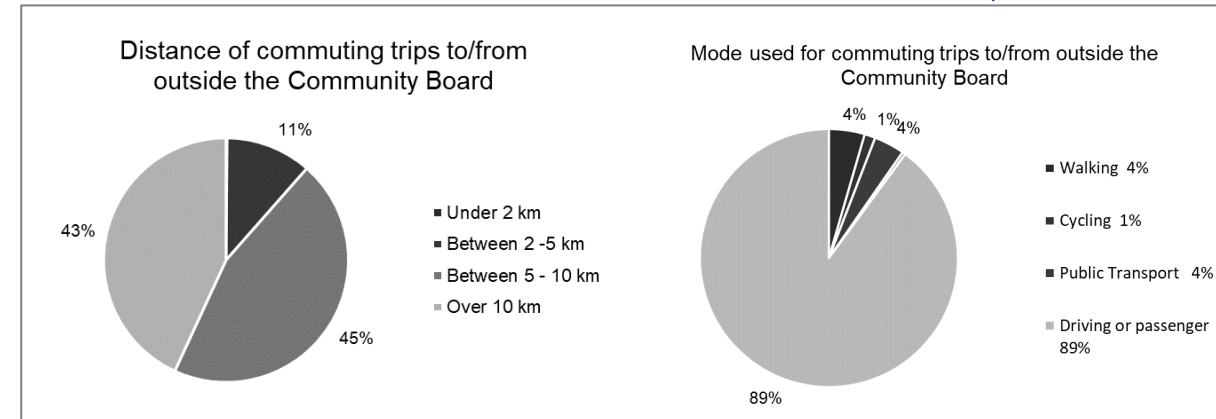
Commuting trips into and out of the Community Board area are generally longer, with 45% of the trips between 5 and 10km and 43% of the trips over 10km. Car use for these trips is high at 89%, however, public transport use is also higher than within the Community Board area, at 4%. This suggests there may also be potential for encouraging active travel to and from public transport facilities.



1,252 commuting trips within Beeches



1,445 commuting trips to and from the rest of Buckinghamshire



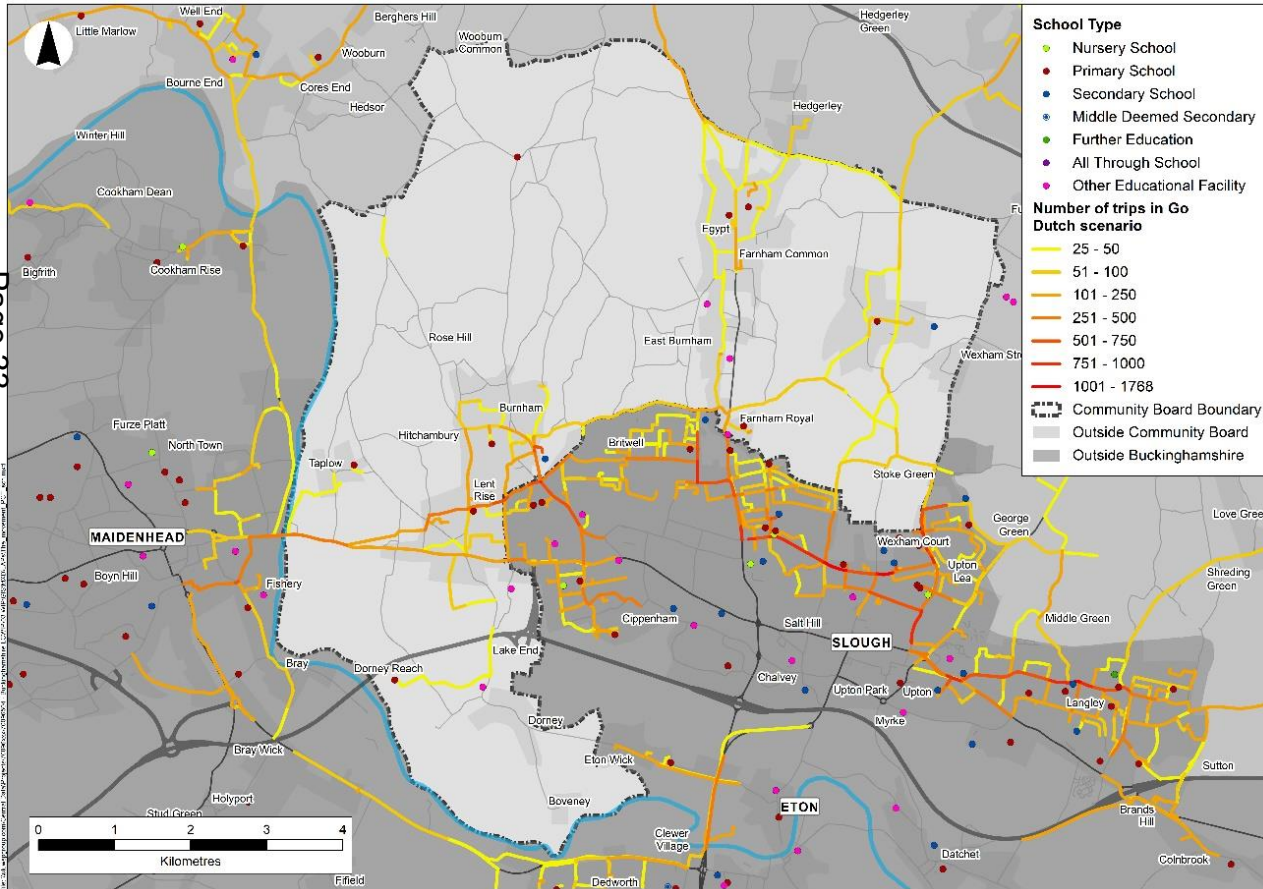
The Movement: Potential Cycling Trips



The government-funded Propensity to Cycle Tool (PCT) is a nationwide web-based tool for estimating cycling potential. The PCT presents scenarios indicating how levels of cycling to school and to employment might change in the future. The most ambitious scenarios for both journey purposes are presented in this profile – ‘Go Dutch’ for trips to school, and the e-bike scenario for trips to employment.

In most scenarios, cycling potential is based on trip distance (people are more likely to cycle a shorter trip than a longer trip) and hilliness (people are generally less likely to cycle a trip involving hills).

The adjacent figure shows trips to school which could be cycled under the Go Dutch scenario, mapped to the most direct road or route. The scenario shows the expected levels of cycling if infrastructure was provided in a similar way to The Netherlands. Note that the PCT considers hypothetical future scenarios and assumes any cultural, safety and other barriers to cycling have been removed. The scenarios are based on the most recent publicly available data (from 2011). The tool is designed to support planning based on local knowledge; therefore the outputs are indicative and require careful interpretation.



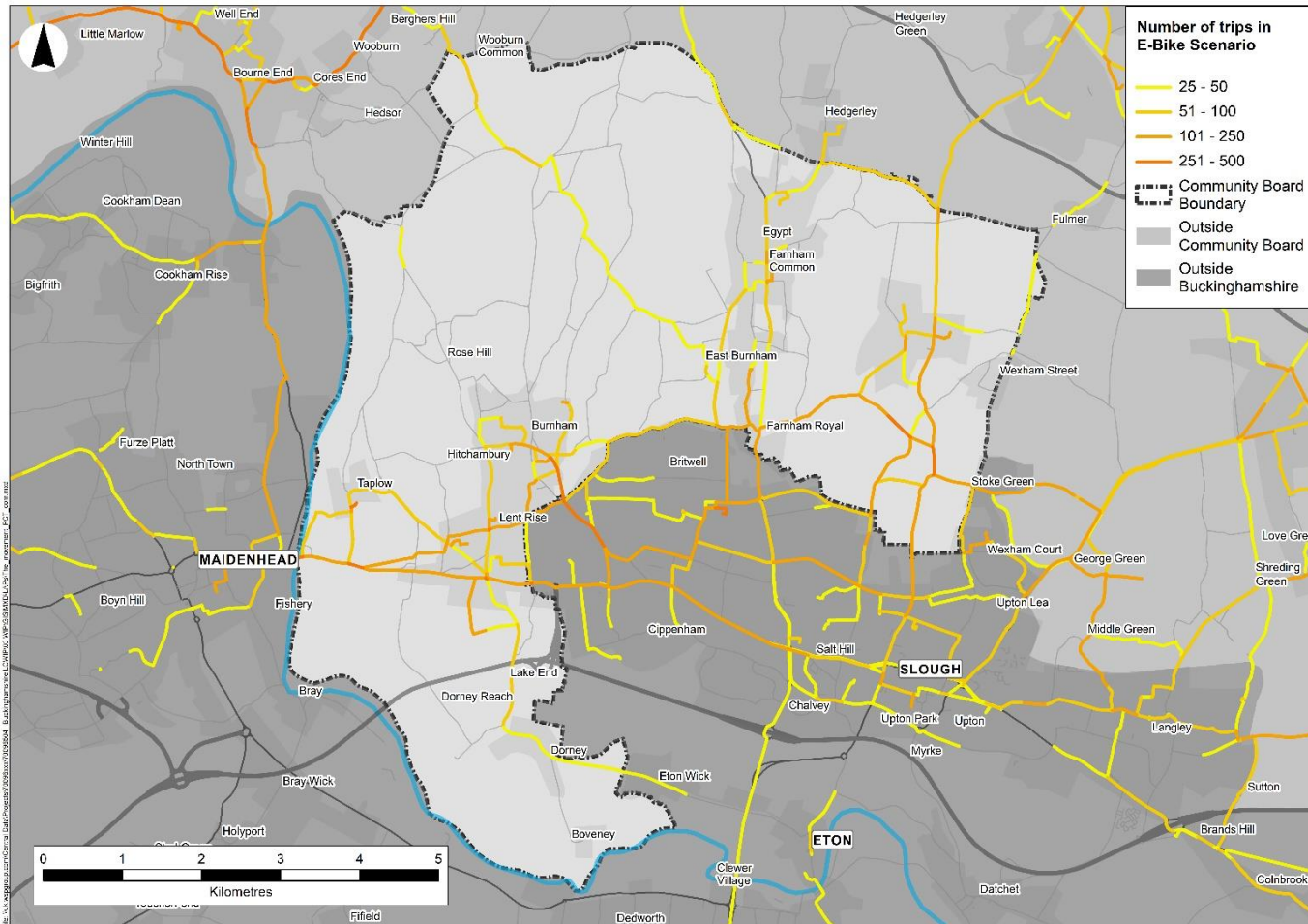
The PCT analysis suggests that the greatest potential number of cycling to school trips between settlements are on the following corridors:

- Between Burnham and Maidenhead;
- Between Burnham and Slough;
- Between Slough and Maidenhead along the A4 corridor; and
- Farnham Common to Beaconsfield.

The Movement: Potential Cycling Trips



The figure below shows the potential for commuting cycling trips in the e-bikes scenario, which takes account of electric cycles in boosting cycling in hillier and more rural areas.



It shows journeys which could be cycled based on trip distance and hilliness, with e-bikes enabling some longer or more hilly journeys to be made, based on Dutch and Swiss data. Trips are mapped to the most direct road or route.

Note that the PCT considers hypothetical future scenarios and assumes any cultural, safety and infrastructure barriers to cycling have been removed. The scenarios are based on the most recent publicly available data (from 2011). The tool is designed to support planning based on local knowledge; therefore the outputs are indicative and require careful interpretation.

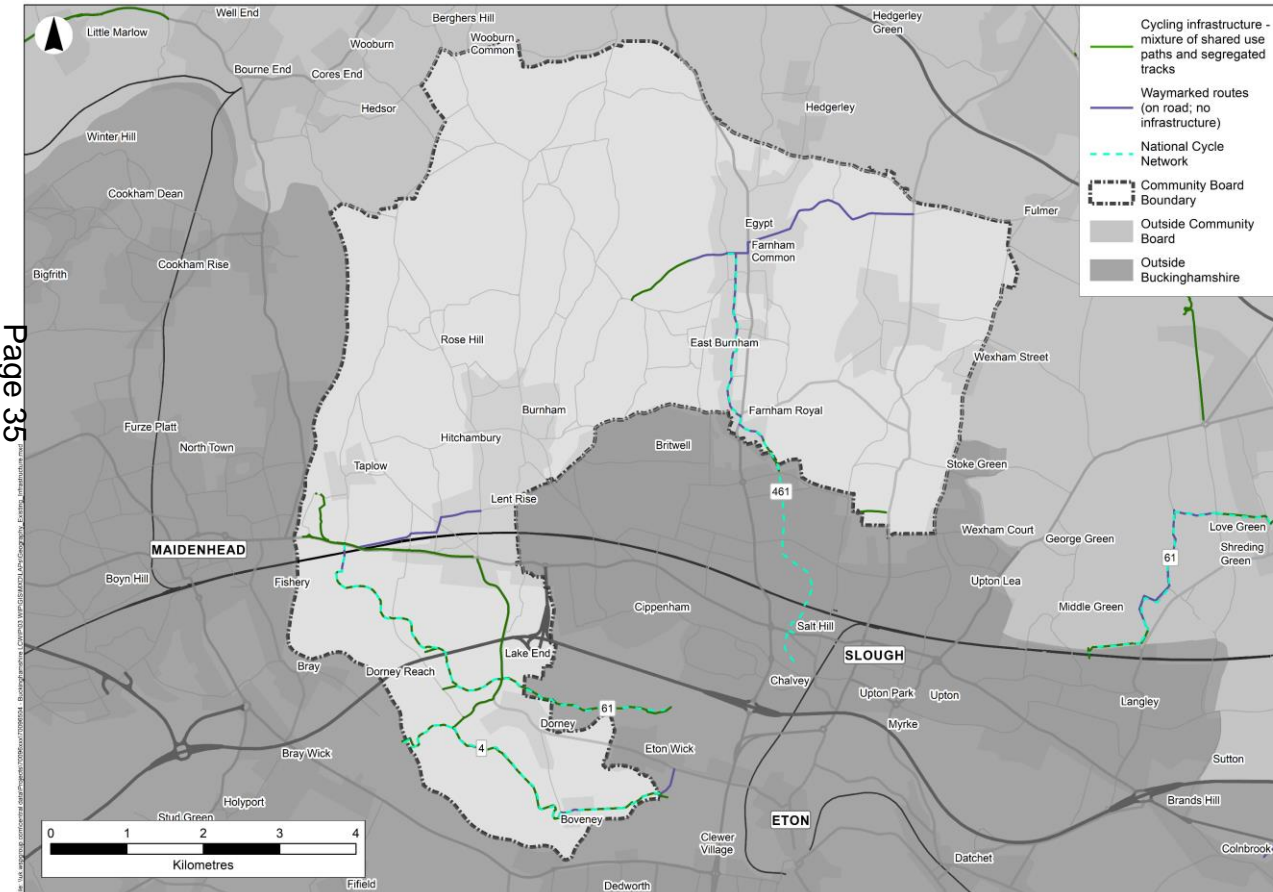
The PCT analysis suggests that the greatest potential number of cycling to work trips between settlements are on the following corridors:

- Between Burnham and Slough;
 - Between Burnham and Maidenhead;
 - Between Slough and Maidenhead along the A4 corridor;
 - Between Farnham Royal and Slough;
 - Between Stoke Poges and Slough; and
 - Between Farnham Royal and Wexham Park Hospital.
- Some of these corridors align with those identified in the cycling to school analysis.

The Network



The map below shows existing cycling infrastructure and waymarked cycle routes. The infrastructure shown is focused on that within Buckinghamshire; however many of the routes may continue outside the county area. Cycling infrastructure (shared use paths or segregated cycle tracks) are shown in green, while waymarked routes are shown in purple. The map does not give an indication of the suitability or quality of infrastructure. Most of the infrastructure shown is for walking, wheeling and cycling.



Within the Community Board area, cycle infrastructure is mostly concentrated in the area between Taplow and Eton Wick. This includes a section of National Cycle Network (NCN) route 4 from Dorney Reach to Eton Wick (passing Dorney Lake) and a section of NCN 61 following the south bank of the Jubilee River.

Cycleways/footways run along the A4 Bath Road between Maidenhead Bridge and the M4 Spur Roundabout, and from Burnham Sainsbury's store to Dorney Lake.

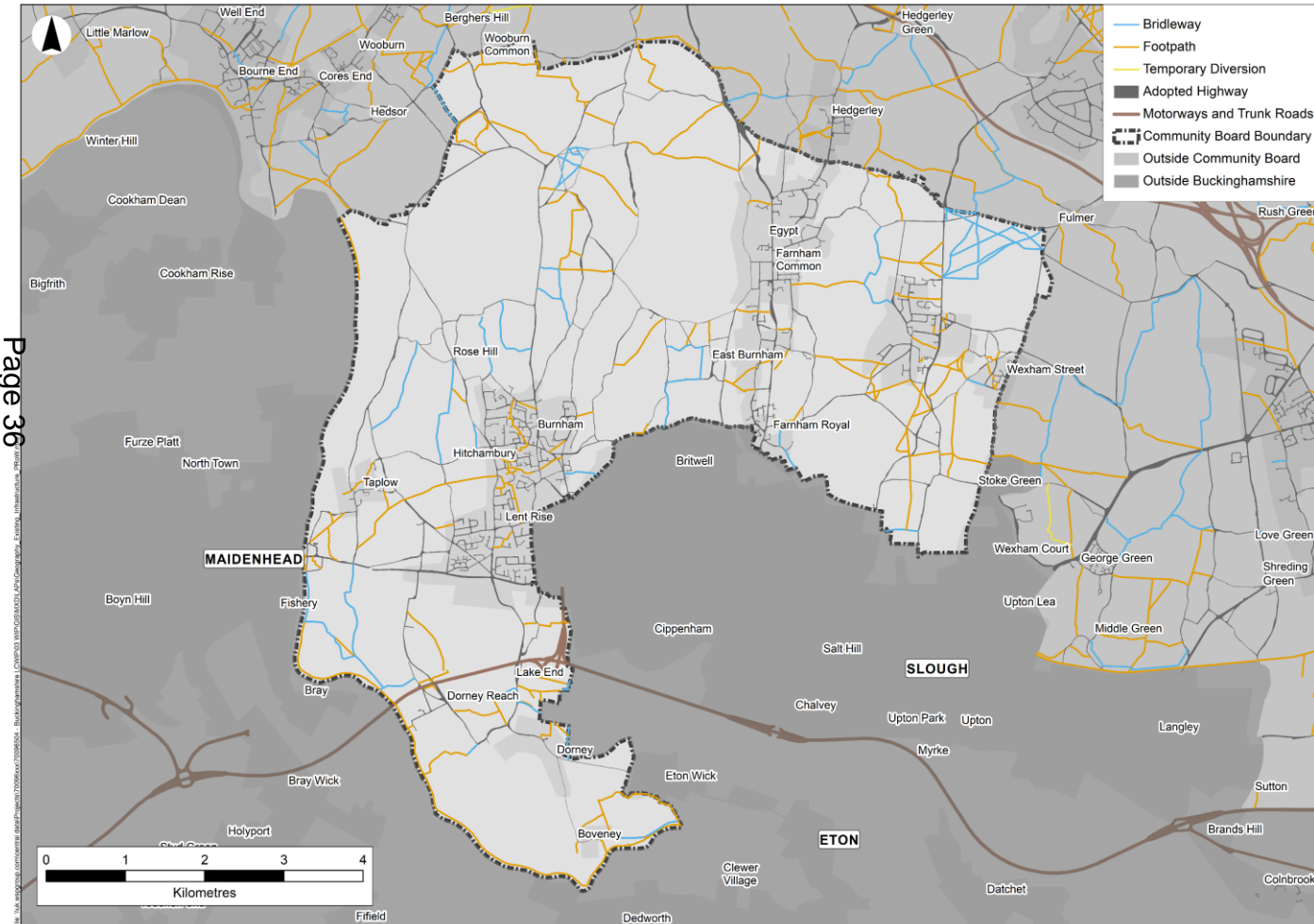
On-road cycle routes are waymarked between Burnham and Taplow Station as well as between Farnham Common and Farnham Royal.

Much of the Community Board area does not have dedicated infrastructure for cycling. There is however a network of public byways and bridleways (see next slide).

The information shown on the plan has been compiled from data held by Buckinghamshire Council and OpenCycleMap, but may not represent the full extent of infrastructure.



The map below shows the extent of the combined public rights of way and highway (road) networks within the Community Board area. Taken together, the highway network and public rights of way (footpaths, bridleways, byways open to all traffic, and restricted byways) form an extensive dense network of routes.



In some places, public rights of way provide alternative routes to the road network, however, there are locations where rights of way are disconnected from each other. Each link varies in its suitability for active travel, due to:

- High motor traffic flows on parts of the road network;
- The limited extent of footways;
- Routes which are unsurfaced or have poor surfaces, cross agricultural land or involve gates and stiles, limiting their use for everyday journeys; and
- The rural, unlit and isolated character of many of the roads and rights of way, which gives rise to personal security concerns and limits use outside hours of daylight.
- The public rights of way category which applies, and therefore which types of user, or vehicles, can legally use it.

Aspirations



The table below outlines known aspirations for walking and cycling infrastructure across the Community Board area with a focus on connections between and through settlements. Based on this focus, the list of aspirations considers projects that are either live, have been previously investigated, or are identified in adopted or emerging Council policies. The list of aspirations will be expanded through the Buckinghamshire LCWIP engagement and data analysis.

Indicative categories have been assigned to indicate the relative stage of development each proposal has reached in terms of investigation and design. These categories are not an indication of prioritisation.

Category 1	Fully formed scheme, awaiting funding and/or delivery
Category 2	Scheme with some design and study; needs some further investigation before ready for funding
Category 3	Scheme is in early stages of development; needs significant investigation to proceed
Category 4	Scheme is an aspiration only
Category 5	Scheme does not fit in the above categories

Page 37

Corridor (if known)	Description	Policy Link/Source	Cross-Boundary connection?	Category
---------------------	-------------	--------------------	----------------------------	----------

No aspirations within the Beeches Community Board area currently identified

This page is intentionally left blank



Buckinghamshire LCWIP

Introductory Presentation for Community Boards



What is a LCWIP and why develop one?

Local Cycling and Walking Infrastructure Plans (LCWIPs) are evidence-led, long-term plans to identify cycling, walking, and wheeling improvements. 'Wheeling' is an emerging term to refer to adapted cycle, wheelchair and mobility scooter users.

The LCWIPs Technical Guidance document was published in 2017. It sets out the recommended six stage process for developing LCWIPs. Since its publication, and in light of the COVID-19 pandemic, there has been a growing national interest in walking, cycling and wheeling and an emphasis on the importance of high-quality infrastructure. This is reflected in national infrastructure design guidance and policy documents.

By developing LCWIPs, local authorities are able to take an informed network-based approach to planning and delivering this infrastructure.

The design and delivery of infrastructure often requires external funding. LCWIPs can be used to guide future investment decisions and support funding bids.

LCWIPs provide:

Network Plans

Identifying preferred routes for further development

Prioritised Programme

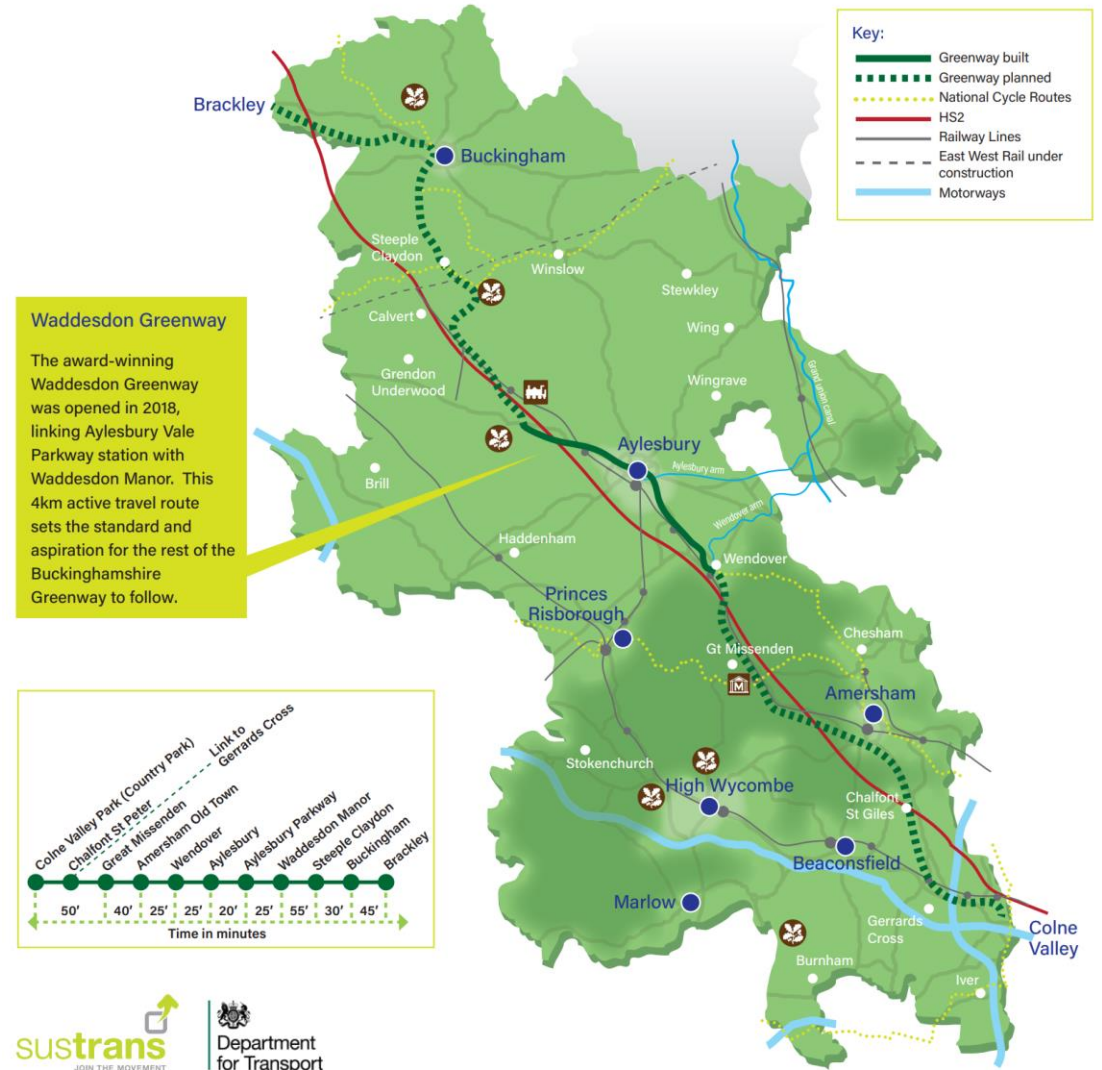
A list of infrastructure improvements for future investment

Background Report

Explaining the process followed and analysis undertaken

Buckinghamshire LCWIP

- The Council has existing and emerging local area LCWIPs for Aylesbury Garden Town, Buckingham and High Wycombe. A LCWIP for Chesham is being produced locally.
- We are now developing a Council-wide LCWIP that will outline a high-level strategic network across Buckinghamshire; the **'Buckinghamshire LCWIP'**
- Using data, evidence, and stakeholder engagement, the Buckinghamshire LCWIP will identify an aspirational high-level network of future walking, wheeling, and cycling corridors across the Council area. It will incorporate and build upon the emerging **Buckinghamshire Greenway** flagship north-south network spine (see adjacent map).
- The Buckinghamshire LCWIP will adopt a 'to and through' approach to developing the network, focusing on strategic connections between settlements rather than local routes that are wholly within settlements.



Why are we developing the Buckinghamshire LCWIP?

An authority-wide LCWIP will:

- ▶ Provide a clear and prioritised plan of infrastructure improvements that will shape the Council's delivery approach
- ▶ Support the emerging Local Transport Plan 5 and Local Plan
- ▶ Help the Council achieve a range of its priorities and policy objectives (for example, tackling climate change, improving air quality, creating healthy and well-connected communities)
- ▶ Bring together existing local strategies and key high-potential aspirations into one plan
- ▶ Outline good infrastructure design practice, tailored to the Buckinghamshire context
- ▶ Provide an evidence base for funding bids to national government

How are we developing the Buckinghamshire LCWIP?

We are using the 16 Community Board areas to sub-divide Buckinghamshire to inform the LCWIP and ensure a consistent network planning approach across the Council area.

The LCWIP will consider corridors that can support links to:

- employment
- education
- public transport hubs and networks
- town and village facilities
- countryside and visitor attractions
- neighbouring authority areas

The LCWIP will also identify opportunities to link local settlements and networks with the Buckinghamshire Greenway, the proposed flagship north-south network spine.

The LCWIP will *not*:

- provide detailed route plans for each village/town in a Community Board area; or
- include every aspiration
- guarantee funding for the delivery of a scheme

All proposals that are identified in the final LCWIP will be subject to further work (design, funding, engagement, etc.)

How are we developing the Buckinghamshire LCWIP?

We are following the recommended 6-stage process outlined in the LCWIP guidance. We are currently at Stage 2.



Next Steps

Alongside this presentation, a Profile has been produced for each Community Board area.

- ▶ The Profile summarises data, including: local population; key origins and destinations for travel; travel patterns; physical geography; existing active travel infrastructure; committed schemes and local aspirations for new active travel infrastructure. The contents of the Profile are being used to help understand the current context of each Board area and inform the LCWIP network planning.
- ▶ Following Local Member input, we are inviting all Community Boards areas to review their Profile and let us know of any additional local aspirations, focusing on links 'to and through' settlements. Each Community Board can send a response using the Microsoft form: bit.ly/BucksLCWIPEngagement. A supporting file (i.e. a map) can be submitted via email if required.
- ▶ Using the data analysis and information received, we will start the LCWIP network planning process.
- ▶ As we progress through the 6 LCWIP stages, further input will be sought from Members, Community Boards, stakeholders, and communities via targeted engagement and wider public consultation.

Useful Links

For further information about national government's approach to LCWIP's and national design guidance for active travel infrastructure:

[Local Cycling and Walking Infrastructure Plan Guidance](#)

DfT 2017

[Local Transport Note \(LTN 1/20\) Cycle Infrastructure Design](#)

DfT 2020

[Gear Change – A Bold Vision for Cycling and Walking](#)

DfT 2020

For further information about LCWIPs and active travel plans in Buckinghamshire:

[LCWIPs and the Buckinghamshire Greenway](#)

[Buckinghamshire Council secures £397k through the Capability and Ambition Fund](#)